

Product Data Sheet

AC3QH-B

Mobile Phone

Multiband Whip



AC3QH-B

Rigid whip

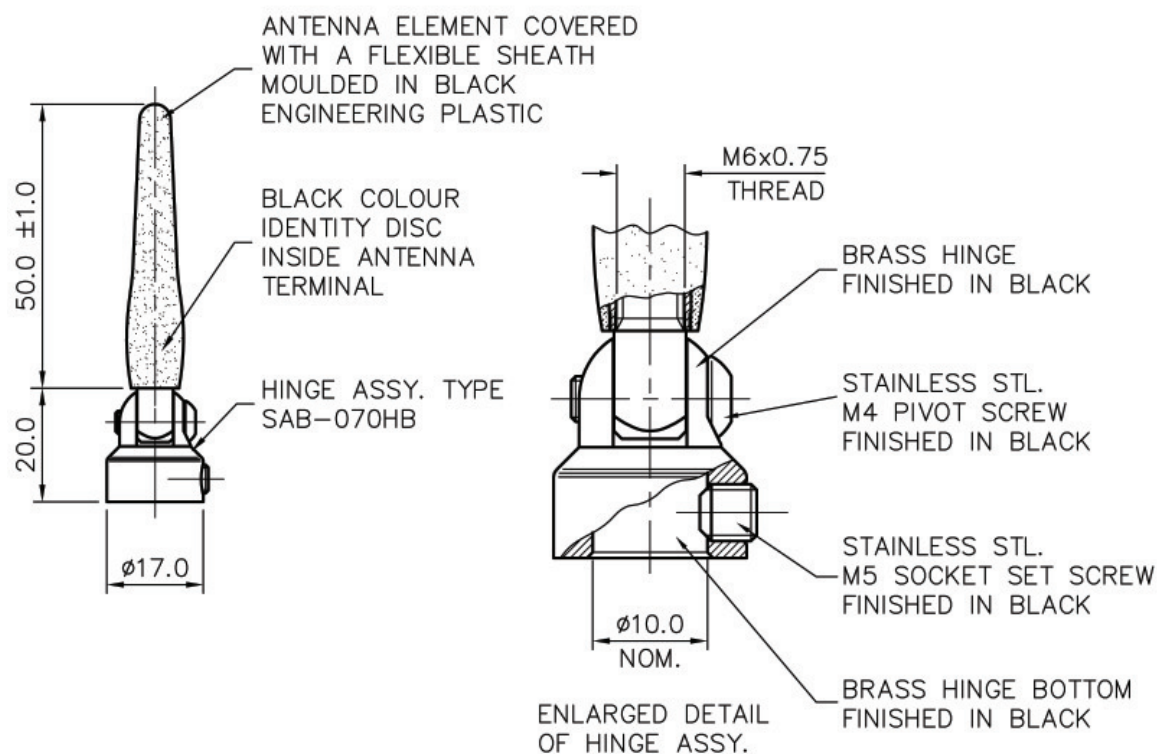
Hinged version

Removable for car wash

All Panorama mobile whips feature either rigid 17-7 PH stainless steel rods with plated brass components and black nylon moulding or have a flexible construction within a nylon tube. When fitted and tuned these antennas will have a typical VSWR of 1.2:1 or less.

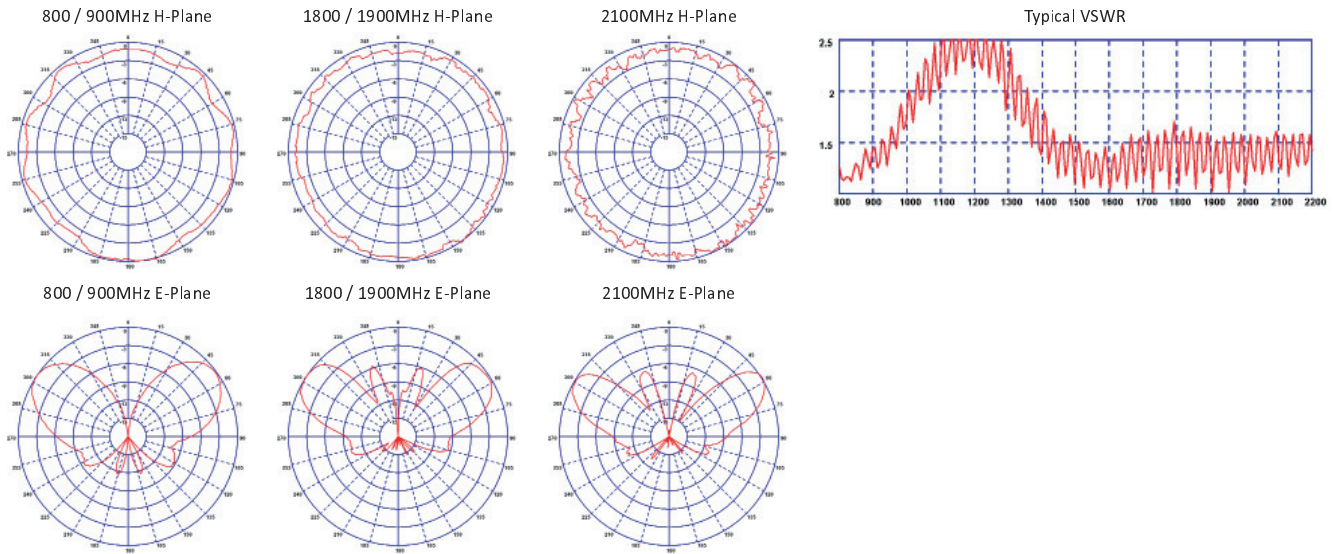
The Panorama moulding system provides a high degree of compatibility between whips and bases, making them suitable for all applications whether temporary or permanent.

Technical Drawing



Mobile Phone

Multiband Whip



Part No.

AC3QH-B

Electrical Data

Frequency Range (MHz)	805-960, 1710-2170
Pre-Tuned Band	AMPS800, GSM900, GSM1800, PCS1900 & 3G UMTS
Gain: Isotropic	2dBi
Compared to ¼ wave	0dB
Polarisation	Vertical
Pattern	Omni Directional
Impedance	50Ω
Max Input Power (W)	10

Mechanical Data

Dimensions (mm)	Whip Length	142
	Base Height	20
	Base Diameter	17
Operating Temp (°C)	-40° / +80°C	
Material	Stainless Steel & Engineering Plastic	
Colour	Black	

Panorama Antennas Ltd
Frogmore, London, SW18 1HF, United Kingdom

T: +44 (0)20 8877 4444
F: +44 (0)20 8877 4477

E: sales@panorama-antennas.com
www.panorama-antennas.com

PANORAMA  *ANTENNAS*